



DETAILS

BY

PLAZA
ON THE RIVER

CLUB AND RESIDENCE. LONDON

PLAZA ON THE RIVER – CLUB AND RESIDENCE

18 ALBERT EMBANKMENT LONDON SE1 7TJ UNITED KINGDOM TEL: +44 (0)20 7769 2525 info@plazaontheriver.co.uk

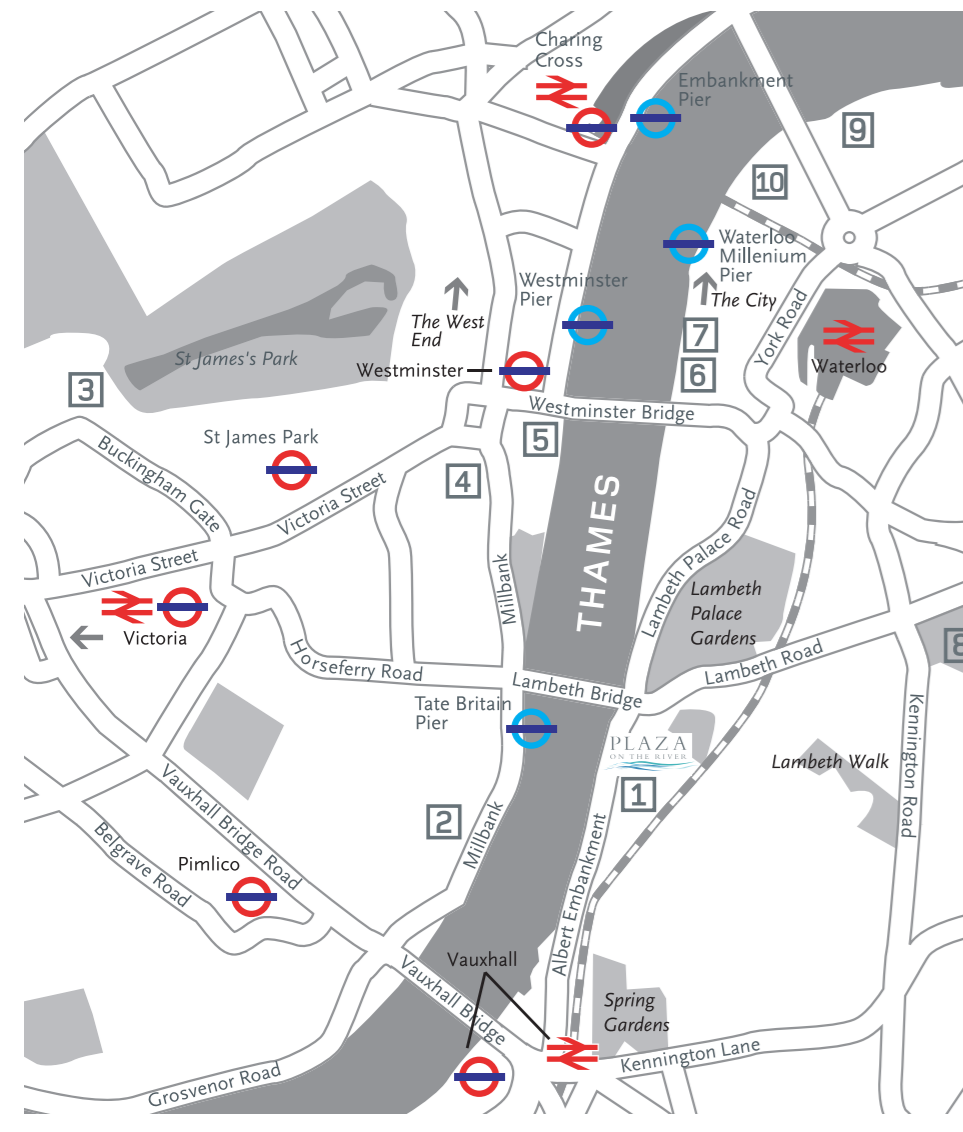
www.plazaontheriver.co.uk

GDS chain code: PK USA / Canada toll free: +1800 791 9161 Europe toll free: +00800 81470000

PARK PLAZA | HOTELS

LOCATION

MAP



- 1 Plaza on the River
- 2 Tate Britain
- 3 Buckingham Palace
- 4 Westminster Abbey
- 5 Houses of Parliament & Big Ben
- 6 London Aquarium
- 7 London Eye
- 8 Imperial War Museum
- 9 The Oxo Tower
- 10 The Royal Festival Hall

LIFESTYLE LONDON

Welcome to Plaza on the River – Club and Residence, London's exclusive all-suite hotel for the ultimate in luxury riverside living. Offering 65 contemporary suites, with options to stay for one night or up to a year, Plaza on the River offers all the comforts of home with the benefit of superior facilities and service.

Strategically positioned on the south bank of the River Thames, the majority of suites at Plaza on the River afford spectacular views of some of London's most impressive landmarks such as the Tate Britain, the London Eye and the Houses of Parliament and is only moments from underground and mainline rail networks.



FLEXIBLE LIVING

From open-plan studio suites to as many as three bedrooms, Plaza on the River has flexible spaces to suit your needs. Larger suites offer a family bathroom plus en-suite to the master bedroom and twin bedded rooms are also available.

Bring the family on your next visit to London – there's plenty of space for you to dine and entertain and you can even invite our Chef to prepare food for you from the convenience of your own kitchen. The dining options are endless as our 24 hour room service team can deliver as much as a 3 course meal for you and your family to enjoy.

Alternatively, our guest relations team will arrange fully-qualified and credited baby-sitting services so you can whisk your partner off for a romantic evening on the town!

Whether your choice is a romantic suite with private balcony overlooking the river, a family suite for up to six people or an ideal space for one, it's your choice, your space, your London home.



SPACE TO RELAX

Each suite is spacious and styled to perfection, offering a contemporary atmosphere in which to relax, work or entertain whilst in the capital. Large, comfortable beds, easy chairs, leather sofas, large work spaces with WI-FI internet connectivity, beautiful marbled en-suite bathrooms with walk-in shower in open plan studios and walk-in shower and bath tub in most one bedroom and two bedroom suites and kitchens fitted with the latest modern appliances adorn each suite, so you have everything you need.

The space within and around your suite and the calm of the river will provide that sought-after feeling of tranquillity in Europe's busiest city.



MEETINGS AND EVENTS

INTIMATE MEETINGS

Combine stylish luxury and comfort with a meeting by the river in one of our one bedroom suites or larger river view suites with private balcony. Plaza on the River suites can accommodate board meetings, small receptions and private dining for up to 15 delegates and as each suite is flooded with natural daylight and equipped with WI-FI internet connectivity, they provide a unique space to think, inspire and motivate.

GLAMOROUS EVENTS

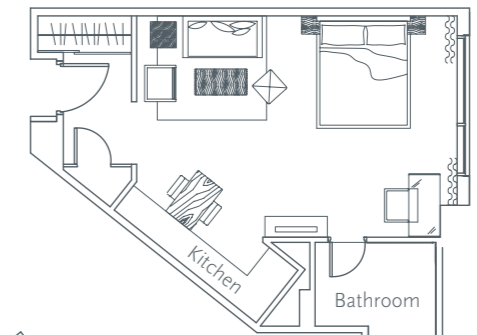
For stylish events and impressive parties, the adjoining Thames Room, with its floor-to-ceiling glass windows and panoramic vista of the river is the ideal setting for glamorous receptions and private functions. Accommodating up to 400 guests the Thames Room, with its spiral sweeping staircase and lift access, a pre-function lounge with private bar, cloakroom and bathrooms, is a unique self-contained event space for the discerning party planner.



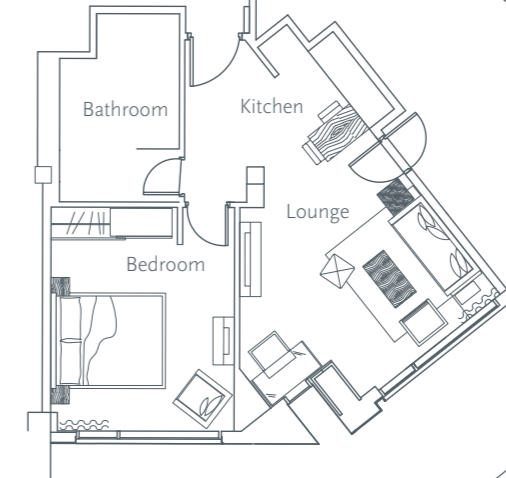
FLEXIBILITY FOR YOU

SUITE LAYOUTS

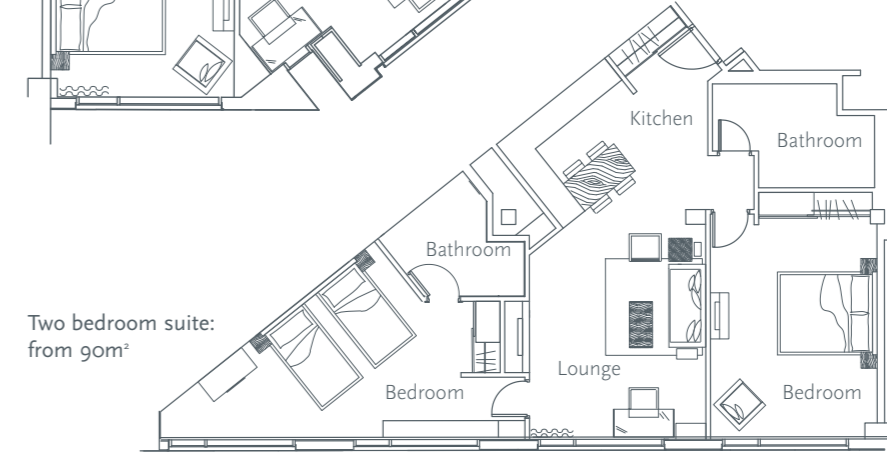
Studio suite: 40m²



One bedroom suite: from 50m²



Two bedroom suite: from 90m²



Three bedroom suite: 140m²

